

581.3582

CRATAEGUS CORALLINA HORT.

Crataegus corallina Hort. — . . . — *Crataegus corallina*
 Hort. (Rosaceae).
 Polygonum.
 C. corallin
 Asterad var. Geum.
 , 32, . . . , 88000,
 , E-mail: hasinets@mail.ru.

Embryology of *Crataegus corallina* Hort. (Rosaceae). – Ya.S. Hasynets. – *The reproductive process has been studied in Crataegus corallina Hort. (Rosaceae). The sterilization of pollen grains is caused by the abnormalities of meiosis under microsporogenesis as well as under development of the male gametophyte. The ovule is hemianatropic, crassinucellate with two integuments. The number of archesporial cells varies. The sporogenous complex is two-layer. One to three sporogenous cells transform into megasporocytes. Normally one linear tetrad of megaspore form. The chalazal or micropylar megaspore develops into the embryo sac according to the Polygonum type. Eusporic haploid embryo sacs degenerate. Ovicell fertilization has not been revealed. The aposporic embryo sacs develop from somatic cells of nucellus chalazal zone and developing absorbed sporogenous complex and its derivatives. C. corallina is characterized apospory – parthenogenesis. The endosperm is nuclear. Fusion of the spermium with the polar nuclei or with the central cell nucleus has been found (pseudogamy). The embryo develops according to the Asterad var. Geum type.*

Key words: archesporium, sporogenous cells, megasporocyte, embryo sac, apomixis, apospory, parthenogenesis
Address: Uzhhorod National University, Dept. of Botany, 32, A. Voloshyn Str., Uzhhorod, 88000, Ukraine,
 E-mail: hasinets@mail.ru.

Crataegus 2n = 32, 34,
 4n = 68 [4].
 350 [3].
 26 *Crataegus* [15, 16].
 20
Crataegus corallina hort. [3].
Crataegus
 Rosaceae. Maloideae, *Crataegus*,
Crataegus,
 Rosaceae – Spireoideae, Rosidae, Prunoideae,
 n=7, 8
 9, Maloideae
 n=17, n=16,
 [7, 10, 15, 16],
 . *C. corallina* – [8-12]
Crataegus

(. 1).
C. corallina

[14].
: 1)
; 2)

; 3)

2002-2007

: 1)
; 2)
- 10:4:1), (:
- 10:7:1)
(: - 3:1) [2].
; 3)

C. corallina

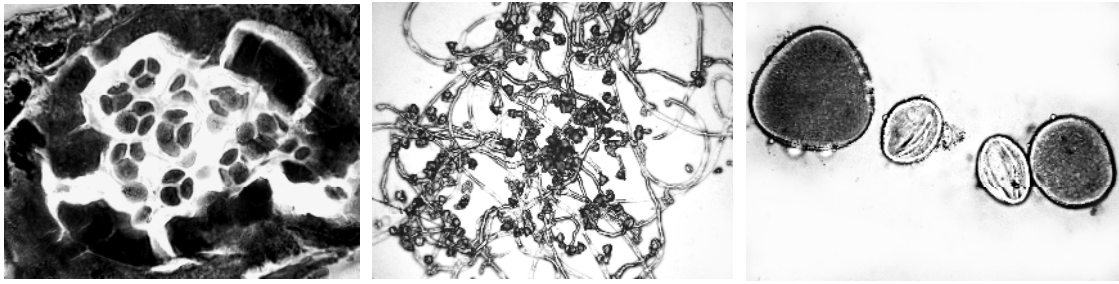
C. corallin 74 %, 15% - 11,3%, 20%
40,8% (. 2).
corallin 20%
170,40 , 15% 76,67
C. corallin
: (= 77,84±4,27
); (= 27,31±1,37
32,24±1,13); = 47,29±1,66) (. 3, 4).

C. corallina (74%)
C. corallina

[5].
C. corallin,
C. corallin

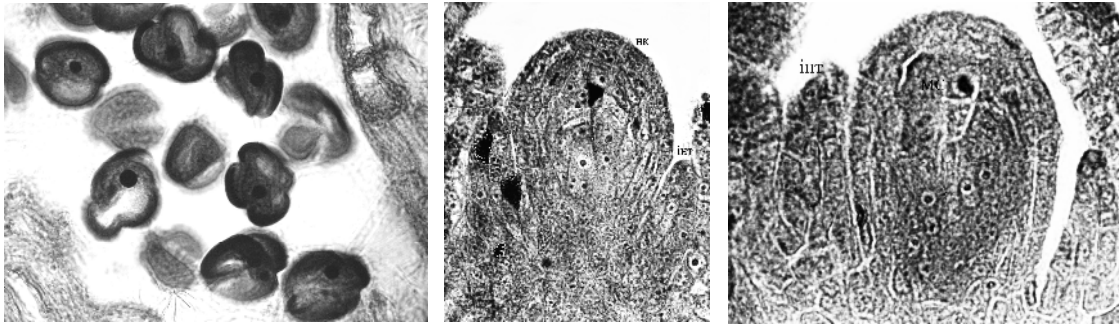
C. corallin (. 5, 6).

A.E. Longley [6],
Crataegus,
C. corallina,
 : 1) *Crataegus*,
 ; 2)
 ; 3)
 Ptak [12]
 ; 4) *C. monogyna* Jacq., *C. oxyacantha* L. *C. cur-*
visepala Lindm. *Crataegus*
C.
curvisepala
C. corallina
C. corallina
C. corallina
 ().
 7, 8).
C. corallina *Crataegus*
 (. 9).
C. corallina
Asterad var. *Geum*.

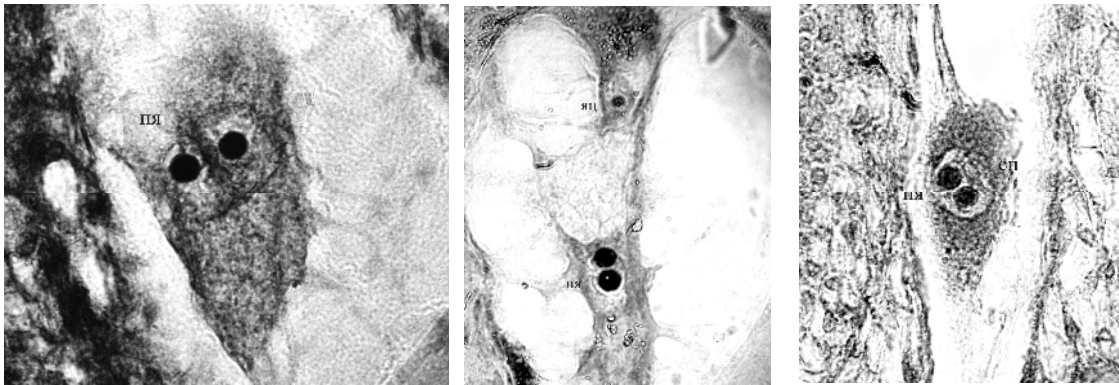


1-3, : 1 — *Crataegus corallina* hort.
 (40x16) 2 — *Crataegus corallina* hort.
 15 % (16x16) 3 — *Crataegus corallina* hort.

(40x16)



4-6, : 4 — *Crataegus corallina* hort. (40x16) 5 — *Crataegus corallina* hort. () (40x16) 6 — *Crataegus corallina* hort. () (40x16)



7-9, : 7 — *Crataegus corallina* hort. () (100x10) 8 — *Crataegus corallina* hort. () (100x10) 9 — *Crataegus corallina* hort. () (100x10)

C. corallina [8, 9] *C. corallina*
pruinosa (J.C. Wendl.) K. Koch., *Crataegus*, [12, 13].
C. corallina [8, 9] *C. pruinosa*
C. corallina
C. oxyacantha, *C. monogyna* *C. curvicepala* [12],

Crataegus,

9], M. Munijamma, J.B. Phipps [8,
C. pruinosa,

[12], *C. monogyna*

Crataegus

Crataegus,

[8, 9, 12]

C. corallina

1. *C. corallina*

2. *C. corallina*

3. *C. corallina*

(74%)

4. *C. corallina*

1. 1997. – 272 .
2. 1954. – 307 .
3. 1954. – 6. – 301 .
4. 1969. – 638 .
5. Davis G.Z. Systematic embryology of the Angiosperms. – New York: Wiley, 1966. – 528 p.
6. Longley A.E. Cytological studies in the genus *Rubus* and *Crataegus* // Amer. natur. – 1923. – 57. – P. 568-569.
7. Longley A.E. Cytological studies in the genus *Crataegus* // Amer. J. Bot. – 1924. – 11. – P. 295-317.
8. Munijamma M., Phipps J.B. Cytological proof of apomixis in *Crataegus* (*Rosaceae*) // Amer. J. Bot. – 1979. – 66, 2. – P. 149-155.
9. Munijamma M., Phipps J.B. Meiosis and polyploidy in Ontario species of *Crataegus* in relation to their systematics // Canad. J. Genet. Cytol. – 1979. – 21. – P. 231-241.
10. Munijamma M., Phipps J.B. Studies in *Crataegus* XI. Further cytological evidence for the occurrence of apomixis in North American hawthorns // Canad. J. Bot. – 1984. – 62. – P. 2316-2324.
11. Munijamma M., Phipps J.B. Studies in *Crataegus*. XII. Cytological evidence for sexuality in some diploid and tetraploid species of North American hawthorns // Ibid. – 1985. – 63. – P. 1319-1324.
12. Ptak K. Cyto-embryological investigations of the Polish representatives of the genus *Crataegus* L. I. Chromosome numbers; embryology of diploid and tetraploid species // Acta Biol. Crac. Ser. Bot. – 1986. – 28. – P. 107-122.
13. Ptak K. Cyto-embryological investigation of the Polish representatives of the genus *Crataegus* L. II. Embryology of triploid species // Ibid. – 1990. – 31. – P. 97-112.
14. Rickett H.W. Forms of *Crataegus pruinosa* // Bot. Gaz. – 1936. – 97. – P. 788-793.
15. Sax J.S. Polyploid and apomixes in *Cotoneaster* // J. Arnold. Arbor. – 1954. – 35. – P. 334-365.
16. Stebbins G.L. The inviability, weakness and sterility of interspecific hybrids // Adv. Genet. – 1958. – 9. – P. 147-215.

: 1 2007 .

: 27 2007 .