



## Research article

## Screening of the microelements composition of drinking well water of Transcarpathian region, Ukraine

Sergii Sukharev<sup>a,\*</sup>, Larysa Bugyna<sup>b</sup>, Oleksandra Pallah (Sarvash)<sup>c,d</sup>, Tetiana Sukhareva (Riabukhina)<sup>e</sup>, Volodymyr Drobnych<sup>f</sup>, Kristina Yerem<sup>g</sup><sup>a</sup> Department of Ecology and Environment Protection, Uzhhorod National University, Uzhhorod, Ukraine<sup>b</sup> Department of Microbiology, Virology and Epidemiology with a Course of Infectious Diseases, Uzhhorod National University, Uzhhorod, Ukraine<sup>c</sup> Department of Clinical-Laboratory Diagnostics and Pharmacology, Uzhhorod National University, Uzhhorod, Ukraine<sup>d</sup> Research Development and Educational Centre of Molecular Microbiology and Mucosal Immunology, Uzhhorod National University, Uzhhorod, Ukraine<sup>e</sup> Transcarpathian Region Scientific Research Forensic Center of the Ministry of Internal Affairs of Ukraine, Uzhhorod, Ukraine<sup>f</sup> Department of Land Management and Cadaster, Uzhhorod National University, Uzhhorod, Ukraine<sup>g</sup> Clinic "Modern World of Dentistry", Uzhhorod, Ukraine

## ARTICLE INFO

## Keywords:

Water quality  
Well waters  
Microelements composition  
Geochemical features  
Pearson's and Spearman's correlation coefficients  
Landscape diversity  
Analytical chemistry  
Environmental analysis  
Environmental chemistry  
Environmental geochemistry  
Geochemistry  
Environmental science

## ABSTRACT

**Background:** For Transcarpathian region, with a pronounced landscape diversity of territories and significant areas of nature reserves, well water is an important source of drinking water. Screening of the microelement composition of drinking well water in Transcarpathia has not been carried out before. The microelement composition of such well water can be considered as the natural (baseline) indicator of quality.

**Methods:** We screened of the microelement (Cu, Zn, Fe, P, Ca, Mg, Mn, Mo, Co, As, Se, I, Br and F) composition of drinking well water in Transcarpathian region (for all 13 districts). Standard methods were used to determination the concentration of chemical elements in well water: electrothermal atomic absorption spectroscopy (Cu, Zn, Fe, Mn, Mo, Co), flame photometry (Ca, Mg), inverse voltammetry (total iodine), potentiometry (F, Br), fluorimetric (Se) and spectrophotometric methods (P, As).

**Results:** The content of chemical elements in well water varies over a wide range, in particular for Cu: 3.27–11.6  $\mu\text{g}\cdot\text{L}^{-1}$ , Zn: 8.16–38.2  $\mu\text{g}\cdot\text{L}^{-1}$ , Fe: 37.9–411  $\mu\text{g}\cdot\text{L}^{-1}$ , P: 51.4–193  $\mu\text{g}\cdot\text{L}^{-1}$ , Ca: 85–139  $\text{mg}\cdot\text{L}^{-1}$ , Mg: 10.2–18.9  $\text{mg}\cdot\text{L}^{-1}$ , Mn: 22.8–78.1  $\mu\text{g}\cdot\text{L}^{-1}$ , Mo: 2.33–8.96  $\mu\text{g}\cdot\text{L}^{-1}$ , Co: 1.72–3.38  $\mu\text{g}\cdot\text{L}^{-1}$ , As: 2.9–17.4  $\mu\text{g}\cdot\text{L}^{-1}$ , Se: 0.95–3.6  $\mu\text{g}\cdot\text{L}^{-1}$ , I: 0.94–4.4  $\mu\text{g}\cdot\text{L}^{-1}$ , Br: 712–3098  $\mu\text{g}\cdot\text{L}^{-1}$ , F: 71–149  $\mu\text{g}\cdot\text{L}^{-1}$ . The tendency that the content of microelements (Cu, Zn, Mn, Mo, Co, As, Se, I, Br, and F) in well waters of different landscape zones was evaluated through Spearman's coefficients. The content of trace elements in the waters of different landscape zones increases in the series: lowland landscape > foothill landscape > mountainous landscape (Spearman's coefficients: Cu – 0.62, Zn – 0.85, Mn – 0.69, Mo – 0.83, Co – 0.79, P – 0.74, As – 0.72, Se – 0.75, I – 0.80, Br – 0.91, F – 0.73).

**Conclusion:** It is shown that the chemical composition of well water can be considered as the natural (baseline) indicator of quality of groundwater in Transcarpathia, taking into account topographic and geochemical features of the territories. Among the main problems of drinking well water in Transcarpathia are the relatively high content of Fe (typical for different landscape zones), as well as the low content of Se, I and F. The correlation of inter-elements content of chemical elements in drinking well waters of Transcarpathia has been revealed. The most pronounced correlations are observed for such pairs of microelements: Co–Mo ( $r > 0.95$ ), I–Br ( $r > 0.92$ ), Zn–Br ( $r > 0.89$ ), Cu–Co ( $r > 0.84$ ), Se–Co ( $r > 0.84$ ), Mo–P ( $r > 0.84$ ), Mo–I ( $r > 0.82$ ) and Zn–Mo ( $r > 0.80$ ).

## 1. Introduction

Water is the foundation of life and an indispensable natural resource. Potable fresh water has particular value. Unfortunately, a significant number of people in the world do not have access to good

quality and safe drinking water. The quality of drinking water, whether surface or groundwater, has a significant impact on the human health [1, 2, 3]. Therefore, a number of works are devoted to assessing the risk for human health from the quality of drinking water [4, 5, 6]. In general, monitoring of the quality of waters, including

\* Corresponding author.

E-mail address: [ssukharev@ukr.net](mailto:ssukharev@ukr.net) (S. Sukharev).<https://doi.org/10.1016/j.heliyon.2020.e03535>

Received 23 November 2019; Received in revised form 26 January 2020; Accepted 2 March 2020

2405-8440/© 2020 The Author(s). Published by Elsevier Ltd. This is an open access article under the CC BY-NC-ND license (<http://creativecommons.org/licenses/by-nc-nd/4.0/>).

drinking waters, is an urgent task [7, 8, 9]. Programs and monitoring systems are developed [10, 11, 12, 13].

In a number of countries around the world, well waters, which can be sensitive to pollution of both of natural and anthropogenic origin, play an important role as sources of drinking water [14]. Assessment of the quality of well and groundwaters suitable for drinking or other purposes is carried out in several countries of the world [15, 16, 17, 18], especially if they have significant sources of pollution. In most cases, the quality assessment and monitoring of drinking well water is carried out according to standard physicochemical or microbiological parameters [19, 20], but drinking water is an important source of microelements for humans. The microelement composition of drinking well water in Transcarpathia has not been assessed previously, while more than half of the region's population use well water as a source of drinking water. Such assessment is relevant for several reasons. Firstly, Transcarpathia has a pronounced geological and geochemical diversity (elevation difference from 100 m to 2100 m), more than half of the region belongs to mountainous or foothill areas. Moreover, within one district, the elevation difference can exceed 1 km. Secondly, the young Carpathian Mountains have high tectonic and geological activity, which can affect the microelement composition of groundwater. About half of the area of the region is covered by forests, more than 13% is the territory of the nature reserve zone, so the microelement composition of groundwater can reflect the geochemistry of different regions (natural quality). Thirdly, the aquifers of Transcarpathia are unprotected and only about 20% are relatively protected.

In this study there are presented the results of screening of the microelement composition of well drinking water of Transcarpathia for 14 chemical elements (total content), which play an important role in human life. The study covered all areas of the region taking into account the topographic and geochemical features of the territories.

## 2. Materials and methods

### 2.1. Sampling and sample preparation

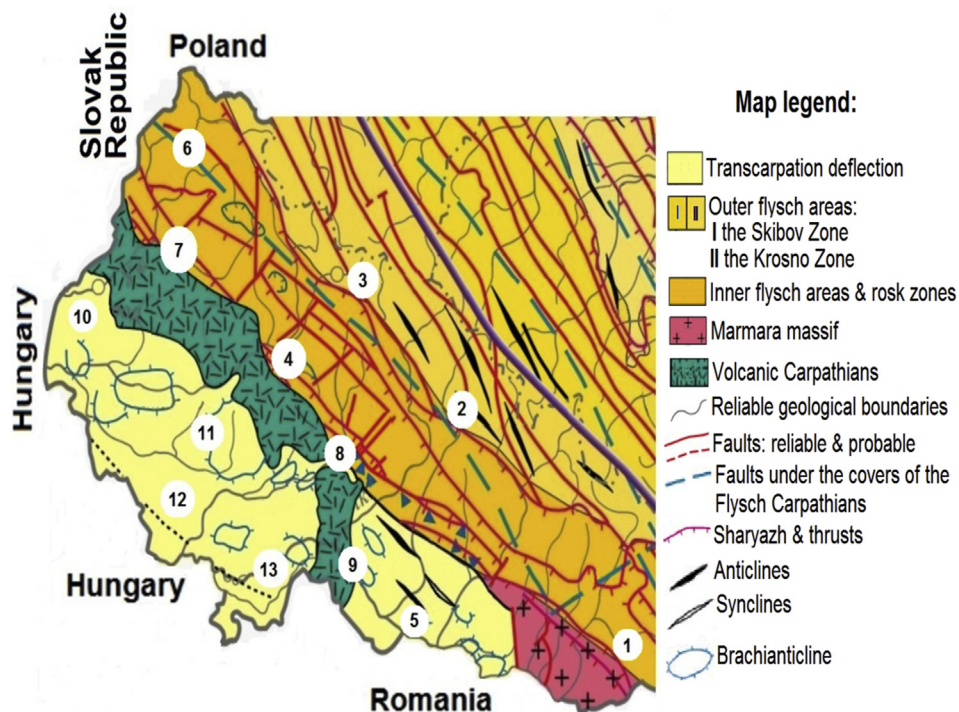
The study was carried out in the summer of 2018. Samples of drinking well water were taken from a depth of 4–10 m, depending of the source. Within each district, 10 samples of well water by volume of 1.0 L were taken, taking into account the area of the district, topographic and geochemical conditions. The sample was averaged proportionally. Well water parameters were determined in the same day in the laboratory without preservation of the sample. The location of the research areas taking into account the landscape diversity is shown in Figure 1. The study was carried out in three landscape areas: mountainous area (3 districts: Rakhiv, Mizhhirya and Volovets), foothill area (6 districts: Svaliava, Tiachiv, Velykyi Bereznyi, Perechyn, Irshava and Khust) and lowland area (4 districts: Uzhhorod, Mukachevo, Berehove and Vynogradiv).

Figure 1 shows that the studied lowland areas (Uzhhorod, Mukachevo, Berehove and Vynogradiv districts) are located within the Transcarpathian deflection. The foothill territories (Perechyn, Velykyi Bereznyi, Svaliava, Irshava, Khust and Tiachiv districts) are located in different territories and cover the Volcanic Carpathians, Marmara massif, outer flysch areas and partially inner covers and rock zones. Mountain areas (Rakhiv, Mizhhirya and Volovets districts) are located on the outer flysch areas (Krosno Zone) and the inner covers and rock zones.

To compare the results, we used bottled drinking water of natural origin (Transcarpathian region).

### 2.2. Geology of Transcarpathian region

Detailed information on the geology of the Transcarpathian region (including the studied territories) is represented in the work [21]. Figure 2 presents a fragment of the Ukrainian Carpathians



**Figure 1.** Fragment of tectonic map of Ukrainian Carpathians (Transcarpathian region). Research areas (district): 1 – Rakhiv; 2 – Mizhhirya; 3 – Volovets; 4 – Svaliava; 5 – Tiachiv; 6 – Velykyi Bereznyi; 7 – Perechyn; 8 – Irshava; 9 – Khust; 10 – Uzhhorod; 11 – Mukachevo; 12 – Berehove; 13 – Vynogradiv.

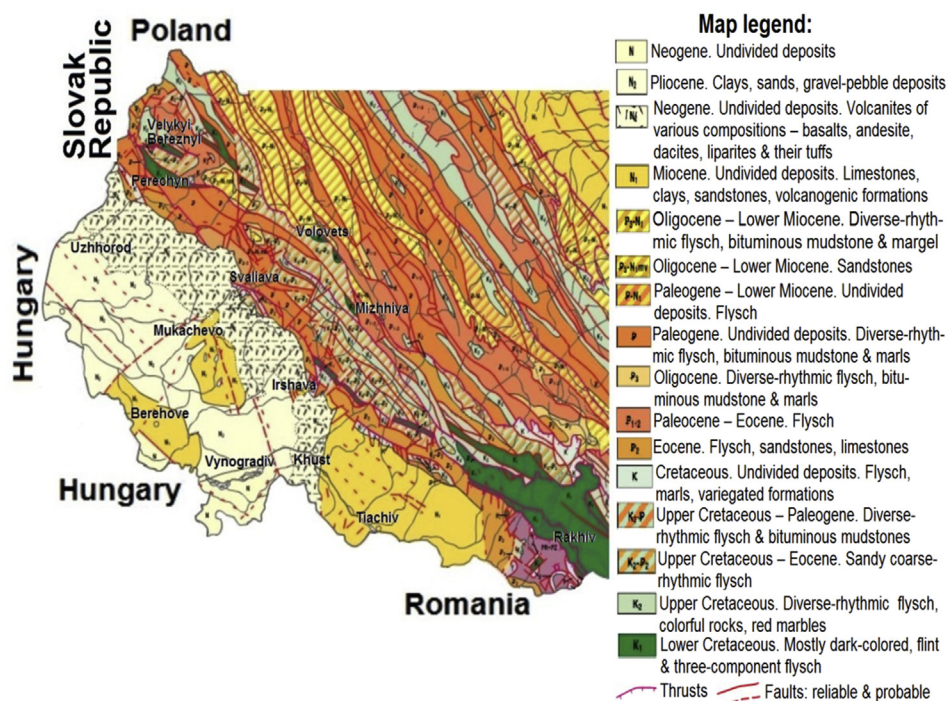


Figure 2. Fragment of geologic map of Ukrainian Carpathians (Transcarpathian region).

(Transcarpathian region) geological map. It can be seen that the geology of the studied areas is complex and is represented mainly by Cenozoic sediments and, to a lesser extent, by Mesozoic sediments.

Brief geological description of the studied territories (Figure 2):

- Uzhhorod district (lowland territory): Pliocene and Neogene;
- Mukachevo district (lowland territory): Pliocene, Neogene and Miocene;
- Berehove district (lowland territory): Pliocene and Miocene;
- Vynohradiv district (lowland territory): Pliocene;
- Perechyn district (foothills): Paleogene, Oligocene and fragmentary Paleocene-Eocene and Lower Cretaceous;
- Velykyi Bereznyi district (foothills): complex combination of Paleogene, Upper Cretaceous-Eocene, Lower Cretaceous, Upper Cretaceous and Oligocene-Lower Miocene;
- Svaliava district (foothills): complex combination of Paleogene, Oligocene-Lower Miocene, Upper Cretaceous-Paleogene and Lower Cretaceous;
- Irshava district (foothills): complex combination of Neogene, Miocene and Upper Cretaceous-Eocene;
- Tiachiv district (foothills): mainly Miocene with elements of Eocene and Upper Cretaceous;
- Khust district (foothills): relatively uniform combination of Miocene, Pliocene and Neogene;
- Volovets district (mountainous area): a complex combination of Oligocene-Lower, Upper Cretaceous Eocene, Paleogene and Paleocene-Eocene;
- Mizhhirya district (mountainous area): Paleogene, Paleocene-Eocene with elements of the Oligocene-Lower and Cretaceous;
- Rakhiv district (mountainous area): a complex combination of Lower Cretaceous, Upper Cretaceous-Eocene, Cretaceous and Upper Cretaceous.

### 2.3. Analytical methods and instruments

All chemicals used were analytical grade, and double-distilled water used throughout the work. Standard methods were used to

determination the concentration of chemical elements in well water [22]. Electrothermal atomic absorption spectroscopy (graphite furnace) was used to determine Cu, Zn, Fe, Mn, Mo, and Co ( $\lambda$ , nm: Cu – 324.8, Zn – 213.9, Fe – 248.3, Mn – 279.5, Mo – 313.3, Co – 240.7). Studies were performed on AAS vario® 6 (Analytik Jena AG, Germany). As a chemical modifier used Pd(NO<sub>3</sub>)<sub>2</sub> ("Suprapur®", Merck, Germany). Determination of Ca and Mg content was carried out by flame photometry ( $\lambda$ : Ca – 423 nm, Mg – 385 nm, FPA-2-01, LLC Labtime, Russia). The total iodine content was determined by inverse voltammetry (complex Ecotest-VA-iodine, Russia). The determination of F and Br was carried out by potentiometric method (SevenCompact S220, Mettler Toledo, USA), Se – by fluorimetry method ( $\lambda_{\text{abs}} = 378$  nm,  $\lambda_{\text{em}} = 520$  nm, Hitachi F-7000, Hitachi Ltd., Japan). The P and As contents were determined by spectrophotometric method (Shimadzu UV-2600, Shimadzu Co., Japan).

### 2.4. Statistics and mapping

This used standard statistical methods, such as the Pearson's and Spearman's correlation coefficients in the software SPSS Statistics (IBM) and OriginPro (OriginLab Corporation).

The program ArcGIS 10.2.1 [23] was used to map the territory of Transcarpathian based on the results of screening the microelement composition of well drinking water.

## 3. Results and discussion

The results of determination of the microelements of drinking well water are presented in Tables 1, 2, and 3. The results of the study show that drinking well water in Transcarpathia is relatively rich in microelements. The microelement composition of well waters in Transcarpathia can be considered as a natural (baseline) indicator of quality. The gradation of the content of microelements in drinking well water in different landscape zones is obviously due to the geochemical features of the territories.

Compared with bottled drinking water, Transcarpathian well drinking water is richer in microelements.

**Table 1.** The results of determination some of metals (total content) in drinking well water of Transcarpathian region ( $n = 6$ ;  $P = 0.95$ ).

Sample waters	Microelement content, $\mu\text{g}\cdot\text{L}^{-1}$					
	Fe	Cu	Zn	Mn	Mo	Co
Rakhiv district*	53.4 ± 3.7	3.27 ± 0.36	8.16 ± 0.73	22.8 ± 1.8	2.33 ± 0.23	1.72 ± 0.17
Mizhhirya district*	327 ± 16	5.89 ± 0.53	9.12 ± 0.82	36.3 ± 2.3	3.99 ± 0.31	1.84 ± 0.18
Volovets district*	97 ± 5	5.30 ± 0.49	10.8 ± 0.9	43.1 ± 2.8	3.83 ± 0.36	2.18 ± 0.22
Average content for mountainous area	159 ± 168	4.82 ± 1.55	9.36 ± 1.44	34.1 ± 11.3	3.38 ± 1.05	1.91 ± 0.27
Svaliava district**	139 ± 8	6.68 ± 0.54	12.9 ± 1.1	47.2 ± 2.9	4.46 ± 0.42	2.45 ± 0.23
Tiachiv district**	109 ± 6	7.31 ± 0.63	29.2 ± 2.2	67.2 ± 3.6	3.87 ± 0.35	2.25 ± 0.21
Velykyi Bereznyi district**	292 ± 15	9.09 ± 0.77	12.5 ± 1.0	41.4 ± 2.8	4.91 ± 0.44	2.59 ± 0.25
Perechyn district**	255 ± 14	9.86 ± 0.83	14.7 ± 1.2	48.9 ± 2.9	5.28 ± 0.48	2.66 ± 0.24
Irshava district**	39.7 ± 3.1	10.3 ± 0.8	22.5 ± 1.7	41.6 ± 2.7	5.84 ± 0.53	3.03 ± 0.25
Khust district**	106 ± 6	7.55 ± 0.65	19.3 ± 1.5	70.6 ± 3.6	4.55 ± 0.41	2.36 ± 0.23
Average content for foothill area	157 ± 135	8.47 ± 1.83	18.5 ± 10.7	52.8 ± 17.8	4.82 ± 1.02	2.56 ± 0.47
Uzhhorod district***	96 ± 5	6.13 ± 0.55	31.8 ± 2.2	39.2 ± 2.4	6.18 ± 0.56	2.77 ± 0.25
Mukachevo district***	56.8 ± 3.9	10.9 ± 0.9	26.9 ± 2.0	70.4 ± 3.5	6.99 ± 0.59	3.17 ± 0.28
Berehove district***	219 ± 12	11.6 ± 0.9	38.2 ± 2.7	78.1 ± 3.9	8.96 ± 0.72	3.38 ± 0.31
Vynogradiv district***	411 ± 19	8.19 ± 0.73	29.4 ± 2.2	69.7 ± 3.7	7.62 ± 0.65	3.19 ± 0.29
Average content for lowland area	196 ± 215	9.21 ± 3.08	31.6 ± 6.6	64.4 ± 25.2	7.44 ± 1.52	3.13 ± 0.36
Bottled drinking water	14.2 ± 1.2	3.38 ± 0.39	8.09 ± 0.73	7.93 ± 0.81	4.17 ± 0.38	2.05 ± 0.21

Note: \* - mountainous area; \*\* - foothill area; \*\*\* - lowland area.

The Fe content in the investigated drinking well water ranges from 37.9 – 411  $\mu\text{g}\cdot\text{L}^{-1}$ . In individual water samples, the Fe content exceeds the recommendations [24], therefore, iron should be removed before drinking this water. Relatively high Fe content in well water is characteristic of all landscape zones of Transcarpathia (Figure 3). We can see that no pronounced pattern of distribution of Fe in well drinking water for different landscape areas of Transcarpathia is observed. So, a relatively high Fe content is observed in the well water of the Mizhhirya district (mountainous area), within the Velykyi Bereznyi and Perechyn districts (foothill area), as well as in the Vynogradiv district (lowland area). It should be noted that the problem of high content of Fe in surface and groundwaters is typical for Transcarpathia. In surface and underground water sources the content of Fe can reach up to 6–8  $\text{mg}\cdot\text{L}^{-1}$ .

In the drinking well waters of Transcarpathia, a relatively high content of Cu and Zn is observed, which is typical for copper-zinc

geochemical provinces. The Cu content in well water varies between 3.27 – 11.6  $\mu\text{g}\cdot\text{L}^{-1}$ , and Zn – between 8.16 – 38.2  $\mu\text{g}\cdot\text{L}^{-1}$ . These indicators comply with drinking water quality standards. For Cu and Zn, a pronounced trend of their distribution in well water of different landscape areas is shown, which can be observed for Zinc (Figure 4). It can be seen that the well water of the mountainous area contains less Zn than the water of foothill areas and, accordingly, lowlands area. So, the average Zn content in the well waters of the mountainous area is 9.36  $\mu\text{g}\cdot\text{L}^{-1}$ , in the waters of the foothill area - 18.6  $\mu\text{g}\cdot\text{L}^{-1}$ , and in the waters of the lowlands area - 31.6  $\mu\text{g}\cdot\text{L}^{-1}$  (Table 1). Average Cu content in well waters of the mountainous area is 4.82  $\mu\text{g}\cdot\text{L}^{-1}$ , in the waters of the foothill area - 8.47  $\mu\text{g}\cdot\text{L}^{-1}$ , and in the waters of the lowlands area - 9.21  $\mu\text{g}\cdot\text{L}^{-1}$  (Table 1).

The patterns of the distribution of microelements in drinking well water, which are observed for Cu and Zn, are characteristic of most

**Table 2.** The results of determination some of non-metals (total content) in drinking well water of Transcarpathian region ( $n = 6$ ;  $P = 0.95$ ).

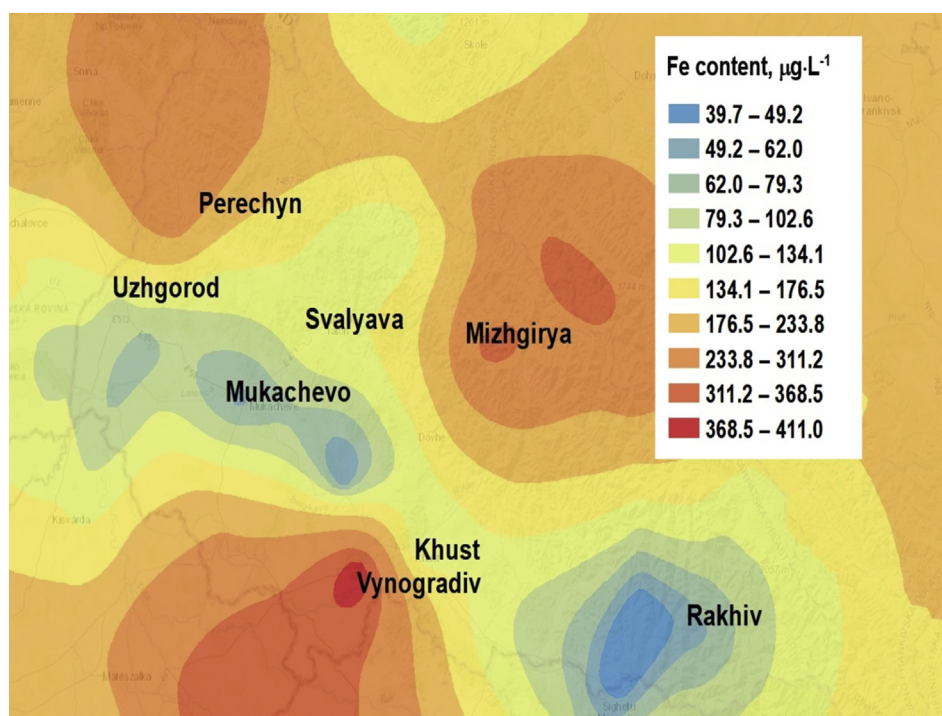
Sample waters	Microelement content, $\mu\text{g}\cdot\text{L}^{-1}$					
	P	As	Se	I	Br	F
Rakhiv district*	51.4 ± 2.6	2.9 ± 0.2	1.1 ± 0.1	0.94 ± 0.11	712 ± 91	77 ± 9
Mizhhirya district*	68.2 ± 3.3	4.4 ± 0.3	0.95 ± 0.11	1.7 ± 0.2	989 ± 124	71 ± 8
Volovets district*	58.9 ± 2.9	3.5 ± 0.2	1.3 ± 0.1	2.3 ± 0.3	991 ± 122	86 ± 9
Average content for mountainous area	59.5 ± 8.7	3.6 ± 0.8	1.12 ± 0.18	1.65 ± 0.71	897 ± 185	78 ± 8
Svaliava district**	86 ± 4	4.9 ± 0.3	1.7 ± 0.2	2.8 ± 0.3	1490 ± 165	99 ± 10
Tiachiv district**	60.1 ± 2.9	6.3 ± 0.3	1.6 ± 0.2	2.6 ± 0.3	2177 ± 207	117 ± 12
Velykyi Bereznyi district**	75.4 ± 3.7	9.3 ± 0.5	1.4 ± 0.2	2.2 ± 0.2	1073 ± 129	112 ± 10
Perechyn district**	91 ± 5	8.2 ± 0.5	2.1 ± 0.2	2.5 ± 0.3	1538 ± 167	124 ± 13
Irshava district**	141 ± 7	13.1 ± 0.7	2.7 ± 0.3	2.1 ± 0.2	1621 ± 179	95 ± 9
Khust district**	98 ± 5	11.2 ± 0.6	1.5 ± 0.2	2.4 ± 0.3	2109 ± 203	119 ± 11
Average content for foothill area	92 ± 49	8.8 ± 4.3	1.8 ± 0.9	2.4 ± 0.4	1668 ± 595	111 ± 16
Uzhhorod district***	109 ± 5	10.7 ± 0.6	2.2 ± 0.2	3.9 ± 0.4	2874 ± 284	131 ± 13
Mukachevo district***	69.5 ± 3.5	5.9 ± 0.3	3.6 ± 0.4	3.7 ± 0.4	2919 ± 263	101 ± 9
Berehove district***	193 ± 9	9.3 ± 0.5	2.1 ± 0.2	3.5 ± 0.5	2515 ± 246	149 ± 14
Vynogradiv district***	155 ± 7	17.4 ± 0.9	3.2 ± 0.3	4.4 ± 0.4	3098 ± 291	107 ± 10
Average content for lowland area	132 ± 63	10.8 ± 6.6	2.8 ± 0.8	3.9 ± 0.5	2852 ± 337	122 ± 27
Bottled drinking water	24.2 ± 1.2	Not detected	0.73 ± 0.08	1.6 ± 0.2	886 ± 112	73 ± 9

Note: as in table 1.

**Table 3.** The results of determination of Ca and Mg in drinking well water of Transcarpathian region ( $n = 6$ ;  $P = 0.95$ ).

Sample waters	Macroelement content, mg·L <sup>-1</sup>		Ca/Mg
	Ca	Mg	
Rakhiv district*	85 ± 4	10.2 ± 0.6	8.3
Mizhhirya district*	97 ± 5	15.9 ± 0.9	6.1
Volovets district*	98 ± 5	17.2 ± 1.0	5.7
Average content for mountainous area	93 ± 8	14.4 ± 4.2	6.7 ± 1.6
Svaliava district**	116 ± 6	13.8 ± 0.8	8.4
Tiachiv district**	131 ± 7	15.4 ± 0.9	8.5
Velykyi Bereznyi district**	110 ± 6	18.3 ± 1.1	6.0
Perechyn district**	88 ± 4	12.9 ± 0.8	6.8
Irshava district**	123 ± 6	13.7 ± 0.8	9.0
Khust district**	122 ± 6	16.9 ± 1.0	7.2
Average content for foothill area	115 ± 27	15.2 ± 2.8	7.7 ± 1.7
Uzhhorod district***	109 ± 5	13.1 ± 0.8	8.3
Mukachevo district***	139 ± 7	18.9 ± 1.1	7.4
Berehove district***	93 ± 5	12.6 ± 0.8	7.4
Vynogradiv district***	133 ± 7	9.7 ± 0.6	13.7
Average content for lowland area	119 ± 26	13.6 ± 5.3	9.2 ± 4.5
Bottled drinking water	58.9 ± 2.9	14.4 ± 0.9	4.1

Note: as in table 1.

**Figure 3.** Map of the distribution of Iron content in the well waters of Transcarpathian region.

chemical elements (Mn, Mo, Co, As, Se, I, Br, and F), except Fe, Ca and Mg. So, the content of Mn in well water is quite high and varies within 22.8–78.1 µg·L<sup>-1</sup>. At the same time, in the well waters of Transcarpathia the relatively low content of Se (0.95–3.6 µg·L<sup>-1</sup>), Iodine (0.94–4.4 µg·L<sup>-1</sup>) and Fluorine (71–149 µg·L<sup>-1</sup>) is observed. The problem of iodine and fluorine deficiency is typical for Transcarpathia [25], especially for mountainous landscape area. Trends in the content of trace elements in well waters in different landscape areas were estimated using Spearman's coefficients.

The content of trace elements in the waters of different landscape zones increases in the series: lowland area > foothill area > mountainous area (Spearman's coefficients: Cu – 0.62, Zn – 0.85, Mn – 0.69, Mo – 0.83, Co – 0.79, P – 0.74, As – 0.72, Se – 0.75, I – 0.80, Br – 0.91, F – 0.73).

The content of Calcium and Magnesium in the well waters of Transcarpathia is quite high (Ca: 85–139 mg·L<sup>-1</sup>, Mg: 9.7–18.9 mg·L<sup>-1</sup>), however, there is no pronounced regularity of their content for different landscape areas. The ratio of Calcium to Magnesium (Ca/Mg) in the well waters of Transcarpathia also does not have a pronounced regularity

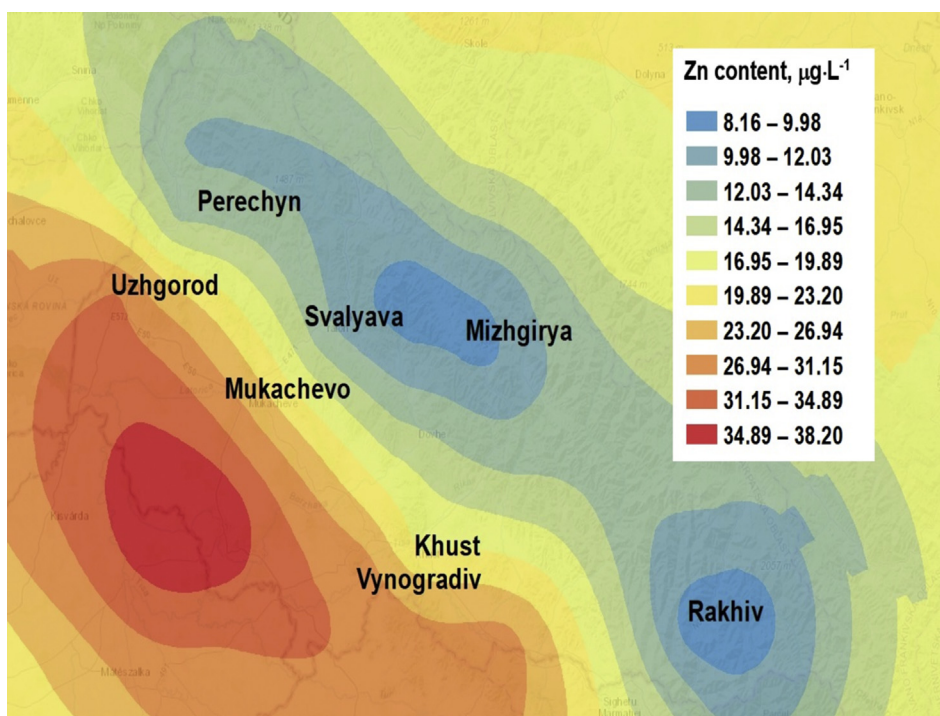


Figure 4. Map of the distribution of Zinc content in the well waters of Transcarpathian region.

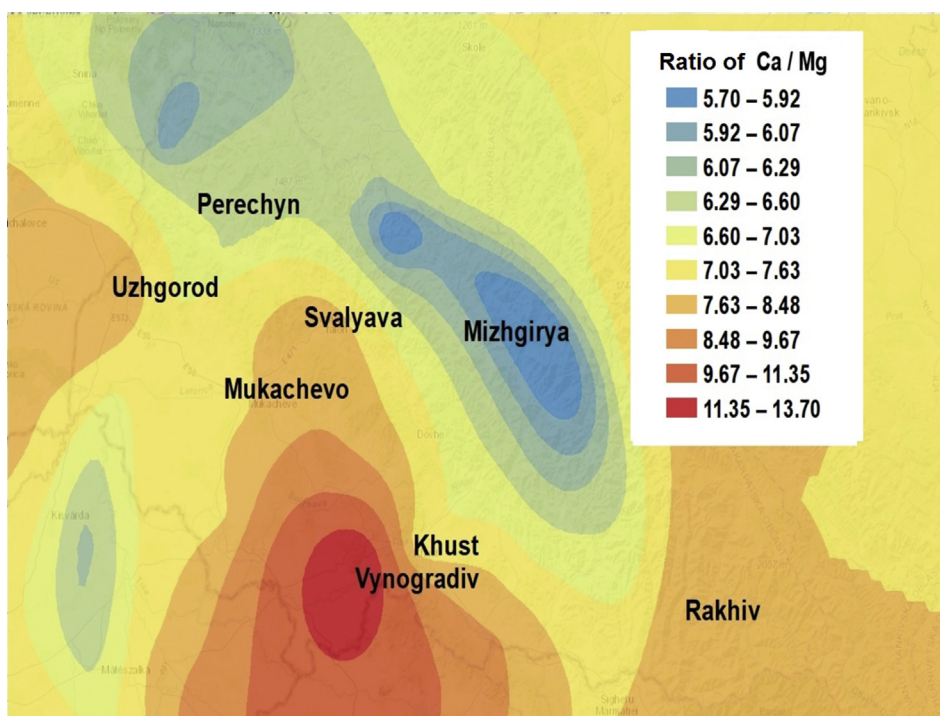


Figure 5. Map of Transcarpathian region by the ratio of Calcium and Magnesium in well waters.

(Figure 5), which is obviously due to the geochemical features of the territories.

We have carried out work to assess the correlation patterns of the interelement composition of drinking well water. The calculation results are presented in the form of a “thermal” diagram (Figure 6). As we can see from the data in the figure, positive correlations observed for all trace elements. The most pronounced correlations observed for such pairs of trace elements: Co–Mo ( $r > 0.95$ ), I–Br ( $r > 0.92$ ), Zn–Br ( $r > 0.89$ ),

Cu–Co ( $r > 0.84$ ), Se–Co ( $r > 0.84$ ), Mo–P ( $r > 0.84$ ), Mo–I ( $r > 0.82$ ) и Zn–Mo ( $r > 0.80$ ). For Calcium and Magnesium, there is practically no correlation with respect to other microelements. More detailed results of the calculation of interelement correlation patterns are presented in Table 4. The established patterns allow the prediction of trends in the possible content of certain microelements in drinking well water based on the data of content of other microelements. This will increase the objectivity of screening and monitoring of well water in Transcarpathia.

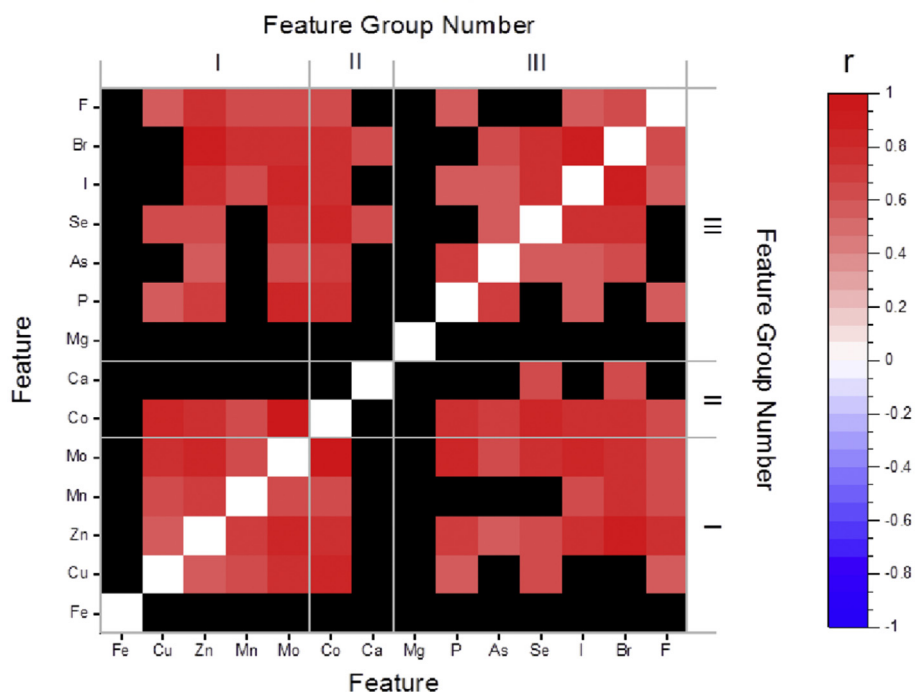


Figure 6. Correlation diagram of the interelement composition of drinking well water (Pearson's correlation coefficient).

Table 4. The results of the calculation of the correlation patterns (Pearson's correlation coefficients) of the interelement composition of drinking well water in Transcarpathian region ( $r > 0.5$ ;  $\sigma < 0.05$ ).

	Fe	Cu	Zn	Mn	Mo	Co	Ca	Mg	P	As	Se	I	Br	F
Fe	X	-	-	-	-	-	-	-	-	-	-	-	-	-
Cu	-	X	0.56	0.63	0.78	0.84	-	-	0.59	-	0.64	-	-	0.58
Zn	-	0.56	X	0.71	0.80	0.77	-	-	0.69	0.55	0.63	0.78	0.89	0.74
Mn	-	0.63	0.71	X	0.66	0.63	-	-	-	-	-	0.66	0.74	0.61
Mo	-	0.78	0.80	0.66	X	0.95	-	-	0.84	0.63	0.74	0.82	0.77	0.65
Co	-	0.84	0.77	0.63	0.95	X	-	-	0.78	0.67	0.84	0.79	0.75	0.63
Ca	-	-	-	-	-	-	X	-	-	-	0.62	-	0.62	-
Mg	-	-	-	-	-	-	-	X	-	-	-	-	-	-
P	-	0.59	0.69	-	0.84	0.78	-	-	X	0.73	-	0.56	-	0.60
As	-	-	0.55	-	0.63	0.67	-	-	0.73	X	0.57	0.58	0.61	-
Se	-	0.64	0.63	-	0.74	0.84	0.62	-	-	0.57	X	0.74	0.78	-
I	-	-	0.78	0.66	0.82	0.79	-	-	0.56	0.58	0.74	X	0.92	0.59
Br	-	-	0.89	0.74	0.77	0.75	0.62	-	-	0.61	0.78	0.92	X	0.61
F	-	0.58	0.74	0.61	0.65	0.63	-	-	0.60	-	-	0.59	0.61	X

#### 4. Conclusion

Based on the screening of the microelement composition (14 chemical elements) of drinking well water in Transcarpathia, patterns of the distribution of chemical elements in waters of different landscape areas were established. It is shown that the chemical composition of well water can be considered as the natural (baseline) indicator of quality of groundwater in Transcarpathia, taking into account topographic and geochemical features of the territories. The content of most microelements (Cu, Zn, Mn, Mo, Co, As, Se, I, Br, and F) in the well waters of mountainous areas is much lower than in the waters of foothill and lowland areas. Several problems of drinking well water in Transcarpathia have been identified. Firstly, it is a relatively high content of Fe in water ( $37.9\text{--}411 \mu\text{g}\cdot\text{L}^{-1}$ ), which requires its removal before use. High iron content ( $>300 \mu\text{g}\cdot\text{L}^{-1}$ ) is characteristic of waters of different landscape areas. Secondly, drinking well waters of Transcarpathian have low content of Se ( $0.95\text{--}3.6 \mu\text{g}\cdot\text{L}^{-1}$ ), Iodine ( $0.94\text{--}4.4 \mu\text{g}\cdot\text{L}^{-1}$ ) and Fluorine

( $71\text{--}149 \mu\text{g}\cdot\text{L}^{-1}$ ). The problem of iodine and fluorine deficiency is typical for Transcarpathian, especially for mountain landscape zones. Correlations for the interelement content of chemical elements in the drinking well waters of Transcarpathia are found. The most pronounced correlations are observed for such pairs of trace elements: Co–Mo ( $r > 0.95$ ), I–Br ( $r > 0.92$ ), Zn–Br ( $r > 0.89$ ), Cu–Co ( $r > 0.84$ ), Se–Co ( $r > 0.84$ ), Mo–P ( $r > 0.84$ ), Mo–I ( $r > 0.82$ ) и Zn–Mo ( $r > 0.80$ ). This allows us to predict the content of some chemical elements in well water based on data on the content of other chemical elements, which will increase the objectivity of monitoring studies.

#### Declarations

##### Author contribution statement

Sergii Sukharev: Conceived and designed the experiments; Analyzed and interpreted the data; Wrote the paper.

Larysa Bugyna, Oleksandra Pallah (Sarvash): Performed the experiments; Contributed reagents, materials, analysis tools or data.

Tetiana Sukhareva (Riabukhina): Performed the experiments; Analyzed and interpreted the data.

Volodymyr Drobnych: Analyzed and interpreted the data; Wrote the paper.

Kristina Yerem: Contributed reagents, materials, analysis tools or data.

#### Funding statement

This work was supported by the Ministry of Education and Science of Ukraine, registration number 0117U000379.

#### Competing interest statement

The authors declare no conflict of interest.

#### Additional information

No additional information is available for this paper.

#### References

- [1] W.M. Edmunds, P.L. Smedley, *Groundwater Geochemistry and Health: an Overview*, 113, Geological Society, London, Special Publications, 1996, pp. 91–105.
- [2] S. Jordana, E. Batista, *Natural groundwater quality and health*, *Geol. Acta* 2 (2004) 175–188.
- [3] P. Li, X. Li, X. Meng, M. Li, Y. Zhang, *Appraising groundwater quality and health risks from contamination in a semiarid region of northwest China*, *Expo. Health* 8 (2016) 361–379.
- [4] A.H. Havelaar, J.M. Melse, *Quantifying Public Health Risks in the WHO Guidelines for Drinking-Water Quality: A Burden of Disease Approach*, Report 734301022/2003, RIVM, Bilthoven, Netherlands, 2003.
- [5] L. Zhu, M. Yang, X. Chen, J. Liu, 2019. *Health risk assessment and risk control: drinking groundwater in yinchuan plain, China*, *Expo. Health* 11 (2019) 59–72.
- [6] M.F. Cengiz, S. Kilic, F. Yalcin, M. Kilic, M.G. Yalcin, *Evaluation of heavy metal risk potential in Bogacayi River water (Antalya, Turkey)*, *Environ. Monit. Assess.* 189 (1–12) (2017) 248.
- [7] W.M. Edmunds, P. Shanda, P. Hartb, R.S. Wardc, *The natural (baseline) quality of groundwater: a UK pilot study*, *Sci. Total Environ.* 310 (2003) 25–35.
- [8] M.V. Storey, B. der Gaag, B.P. Burns, *Advances in on-line drinking water quality monitoring and early warning systems*, *Water Res.* 45 (2011) 741–747.
- [9] N. Subba Rao, *Seasonal variation of groundwater quality in a part of Guntur District, Andhra Pradesh, India*, *Environ. Geol.* 49 (2006) 413–429.
- [10] I.S. Babiker, M.A.A. Mohamed, T. Hiyama, *Assessing groundwater quality using GIS*, *Water Resour. Manag.* 21 (2007) 699–715.
- [11] S. Dahiya, B. Singh, S. Gaur, V.K. Garg, H.S. Kushwaha, *Analysis of groundwater quality using fuzzy synthetic evaluation*, *J. Hazard Mater.* 147 (2007) 938–946.
- [12] B. Nas, A. Berkta, *Groundwater quality mapping in urban groundwater using GIS*, *Environ. Monit. Assess.* 160 (2010) 215–227.
- [13] R.O. Strobl, P.D. Robillard, *Network design for water quality monitoring of surface freshwaters: a review*, *J. Environ. Manag.* 87 (2008) 639–648.
- [14] P. Li, J. Wu, H. Qian, *Hydrogeochemistry and quality assessment of shallow groundwater in the southern part of the Yellow River alluvial plain (Zhongwei section)*, *China, Earth Sci. Res. J.* 18 (2014) 27–38.
- [15] P. Li, *Groundwater quality in western China: challenges and paths forward for groundwater quality research in western China*, *Expo. Health* 8 (2016) 305–310.
- [16] C.R. Ramakrishnaiah, C. Sadashivaiah, G. Ranganna, *Assessment of water quality index for the groundwater in Tumkur Taluk, Karnataka State, India*, *J. Chem.* 6 (2009) 523–530.
- [17] R.P. Richards, D.B. Baker, N.L. Creamer, J.W. Kramer, D.E. Ewing, B.J. Merryfield, L.K. Wallrabenstein, *Well water quality, well vulnerability, and agricultural contamination in the midwestern United States*, *J. Environ. Qual.* 25 (1996) 389–402.
- [18] M. Vasanthavigar, K. Srinivasamoorthy, K. Vijayaragavan, R.R. Ganthi, S. Chidambaram, P. Anandhan, R. Manivannan, S. Vasudevan, *Application of water quality index for groundwater quality assessment: thirumanimuttar sub-basin, Tamilnadu, India*, *Environ. Monit. Assess.* 171 (2010) 595–609.
- [19] C.-W. Liu, K.-H. Lin, Y.-M. Kuo, *Application of factor analysis in the assessment of groundwater quality in a Blackfoot disease area in Taiwan*, *Sci. Total Environ.* 313 (2003) 77–89.
- [20] H. Salehi, H. Zeinivand, *Evaluation and mapping of groundwater quality for irrigation and drinking purposes in Kuhdasht region, Iran*, *Environ. Resour. Res.* 4 (2016) 75–79.
- [21] G.Z. Földvay, *Geology of the Carpathian Region*, World Scientific Publish Inc. Co., Pte. Ltd., Singapore – New Jersey – Hong Kong, 1988.
- [22] APHA, *Standard Methods for the Examination of Water and Wastewater*, APHA-AWWA-WEF, Washington, D.C., 2005.
- [23] C. Childs, *Interpolating surface in ArcGIS spatial analyst*, *ArcUser* 3 (2004) 32–35.
- [24] WHO, *Guidelines for drinking water quality*, in: third ed. Recommendations, 1, World Health Organization, Geneva, 2008.
- [25] Y.Y. Kostenko, V.S. Melnyk, L.F. Horzov, S.B. Kostenko, *Prevalence of main dental diseases in children who live in conditions of biogeochemical fluorine and iodine deficiency*, *Dent. Res. J.* 16 (2019) 271–275.