

()
 ()
 ()
 ()
 ()
 XXI
 Vi eu de Sus ().
 2 1365 [10, . 15].
 2004 16 930
 20 205 .. 1992 - 19 167 .. 2002 - 16 879). (1956 - 13 956 .. 1966 - 16 601 .. 1977 -
 (40), (33) [11]. (76), 1 884 605 (56), (42),
 (14 102)

2002

1.

[8; 9].

	16 879 (100%)	14 878 (88,1%)	530	274	0	70	1 113	14	0
	268 277 (52,6%)	224 526 (83,7%)	35 815	1 964	56	3 636	1 879	388	13
- ()	510 109 (100%)	418 405 (82%)	46 291	34 026	56	8 913	1 954	445	19
	16 879 (100%)	15 031 (89%)	529	232	0	45	1 035	7	0
	268 277 (52,6%)	228 926 (85,3%)	34 623	1 536	36	1 533	1 412	198	13
- ()	510 109 (100%)	425 558 (83,4%)	44 906	33 505	36	4 381	1 476	234	13

(6,6%) 1, (88,1%)
 « »
 70- XVIII

[3].

30-70-

XX

[2,

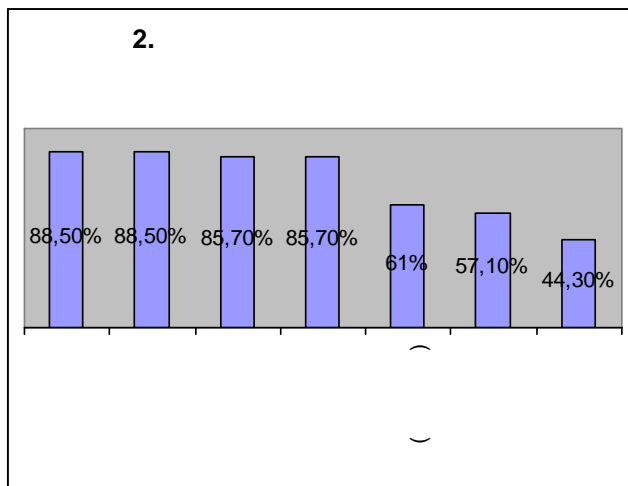
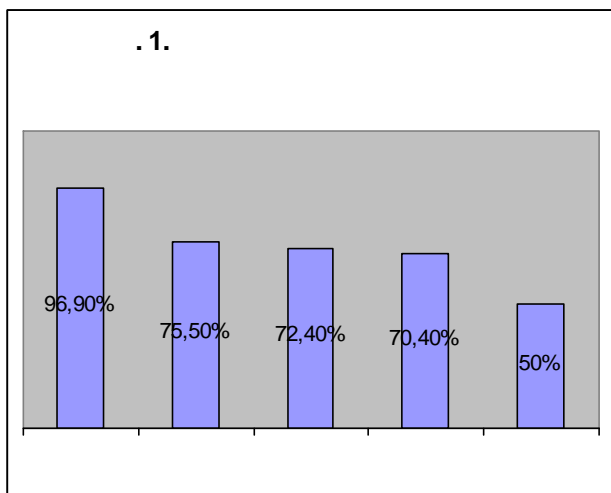
116].

T ului Valea R ului

) [6].

-
-
-

(. . 1)



(. . 2).

()

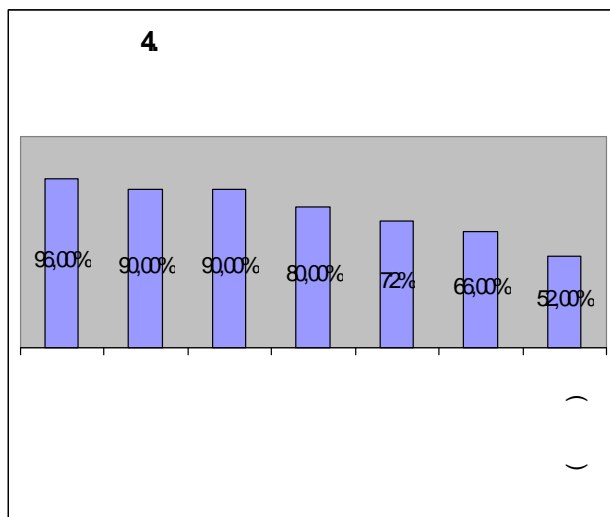
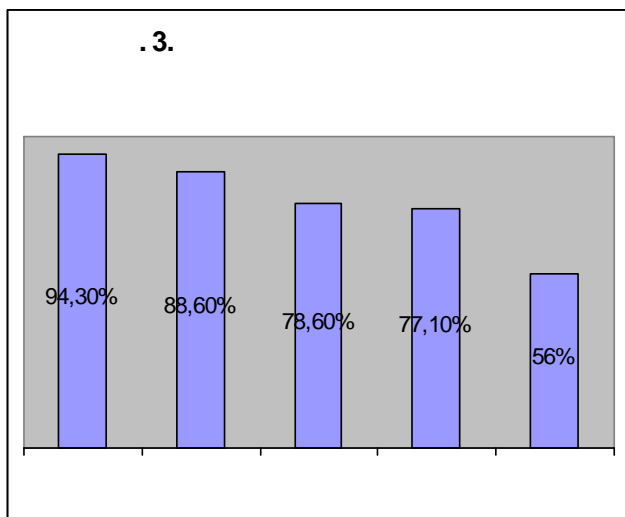
)

[4].

(. . 3),

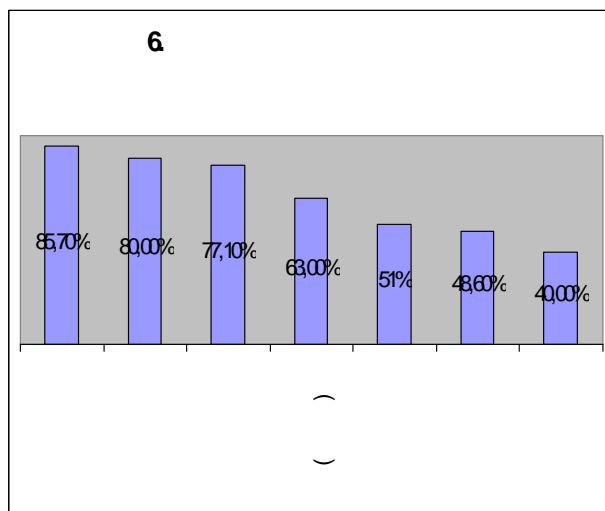
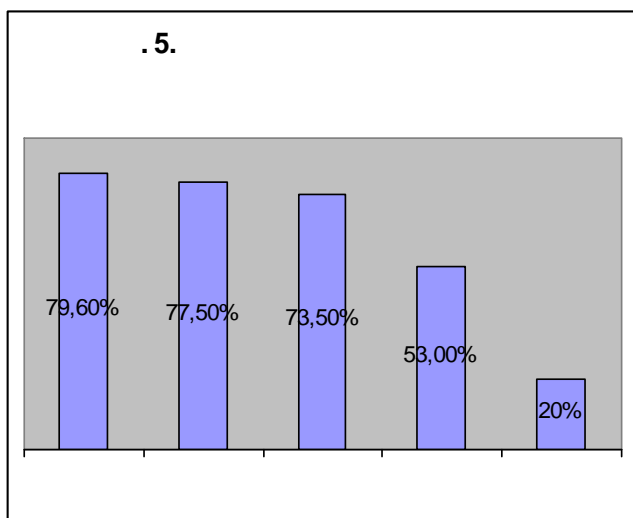
52%

. 4).



(1/3)

(. . 4).



. 5).

(. .)

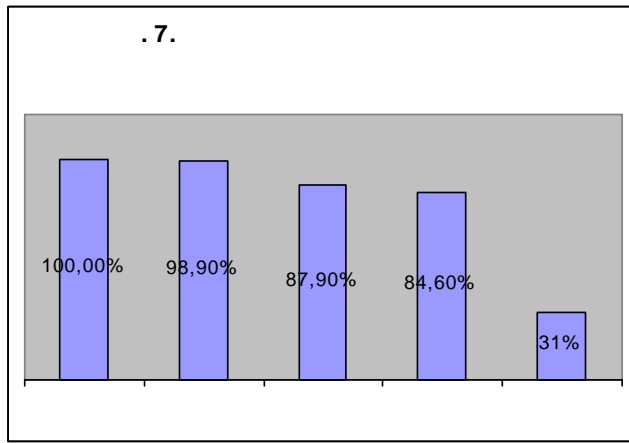
(-)

1868

(. .)

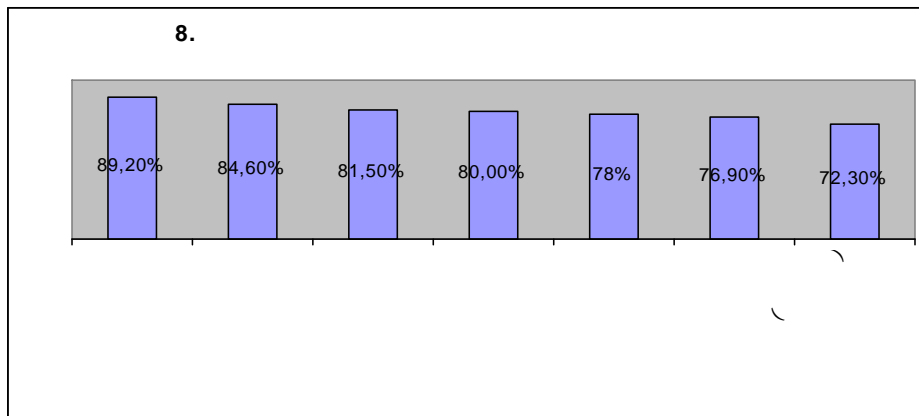
(. .)

« [1, . 29].



(. . 7).

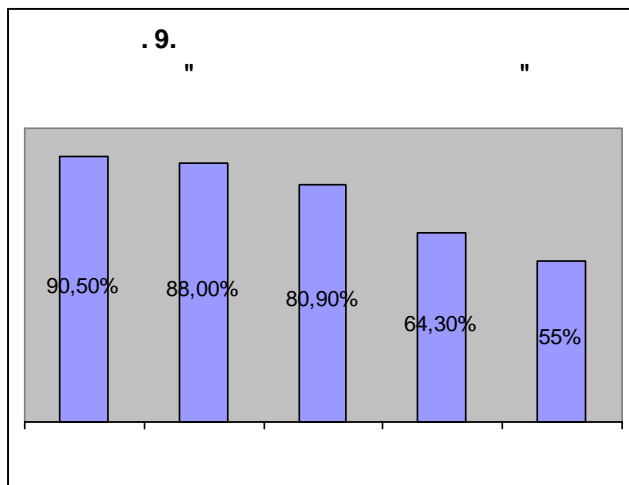
() ().



()

corcitur (. « », « » - .) [5; 7]. : « () ()

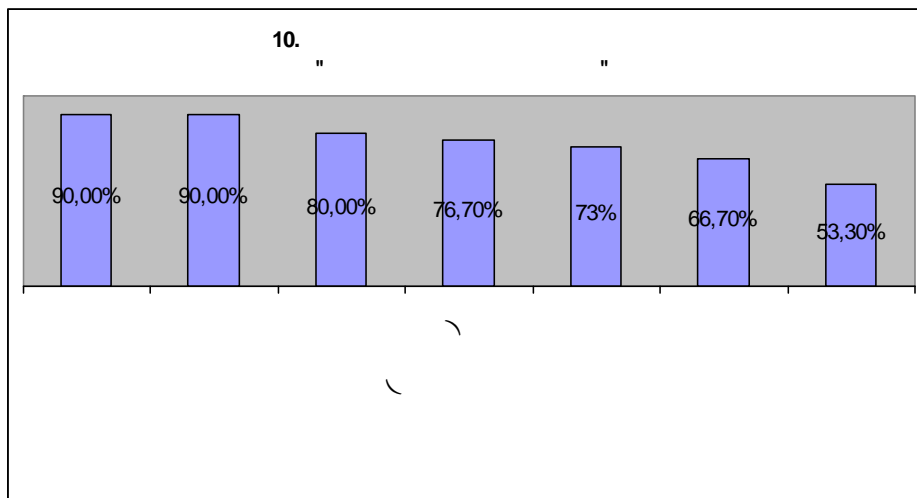
).



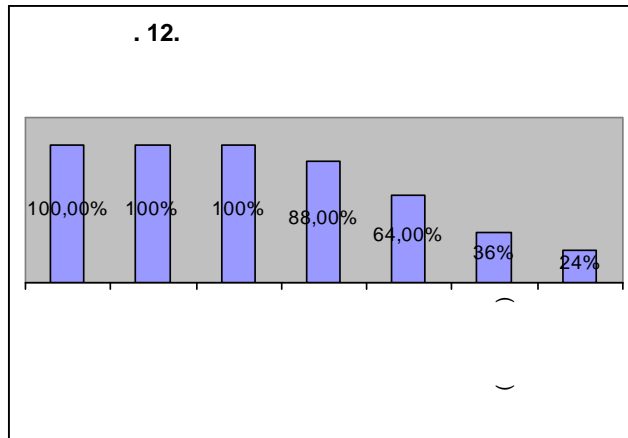
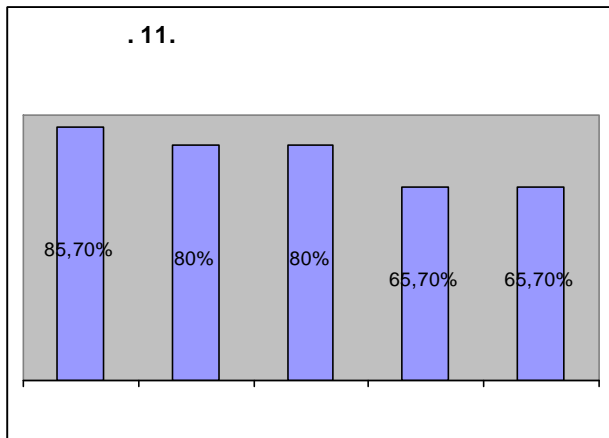
« ».

-« ?» « ?» .

() , « » (? -) .



() « » (. 9, 10) .
 () .
 . 10 « » , « » .
 « »



2002 (70) , (. . 11) .

(. . 12) .

: « - » « - » .

« - »

« » ,

« - » . XIX - . XX .

-
1. () / // Conferin a
international «Rom nia i Russia n sistemul european de dup 1989». Abstracte. 6-8 noiembrie 2008. – Cluj-Napoca : Universitatea Babe -
Bolyai, 2008. – P. 27 – 30.
 2. / . – : , 2001.
– 184 .
 3. (1951
) / . , 22 2007 .
 4. (1946 . .), (1953 . .), (1989 . .) / . , 29 2008 .
 5. (1973
) / . , 29 2008 .
 6. (1950 . .) / . , 28 2008 .
 7. (1969 . .) / . , 28 2008 .
 8. Direc ia Jude iana de statistic (Baia Mare). Jude ul Maramure . Recens m ntul popula iei si al locuitorilor (2002). Popula ia stabila dup
etnie.
 9. Direc ia Jude iana de statistic (Baia Mare). Jude ul Maramure . Recens m ntul popula iei si al locuitorilor (2002). Popula ia stabila dup
limb matern .
 10. Statutul ora ului Vi eu de Sus / Concept de: Antonela v. Marincat. Biroul de rela ii publicul i integrare european . Data: 04.10.2006. – 38 p.
 11. Vi eu de Sus. Demografie [] // Wikipedia. Enciclopedia liber . – :
http://ro.wikipedia.org/wiki/Vi%C5%9Feu_de_Sus#Demografie

SUMMARY

Horvat I.-L., Zan M., Lenio P. INTERETHNIC CONTACTING IN THE MULTICULTURAL REGION (FOR EXAMPLE VISHEU DE SUS TOWN OF MARAMURESH COUNTY (ROMANIA).

In this article analyzed the problem of interethnic relations in the Visheu de Sus town of Maramuresh county. The authors define the ethnic distance using the Bogardus Social Distance Scale. A general conclusion is made about the ethno-cultural tandems «Romanians – Ukrainians» and «Hungarians – Germans» in the town. Gypsies represent the group of isolates. It has been concluded about prospects for such studies.